

THE STATE OF DELAWARE



STATE HIGHWAY DEPARTMENT

CONSTRUCTION PLAN FOR:

CONTRACT NUMBER 67-08-008

FEDERAL AID PROJECT NUMBER F-196(3)

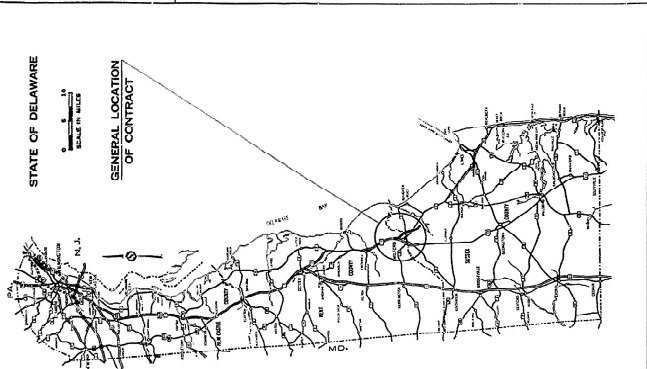
DESIGN DESIGNATION

FEDERAL CHARTS	F.A.P.
ACT. (1957)	12,000
DESIGN SPEED	3,000
MIN. STOPPING SIGHT DISTANCE	70
MAX. SE.	600 FT
MAX. DEGREE OF CURVE	0.068 FT/FEET
MAX. % GRADE	2'-26"
	2.92%

STATE OF DELAWARE

SCALE IN MILES

GENERAL LOCATION OF CONTRACT

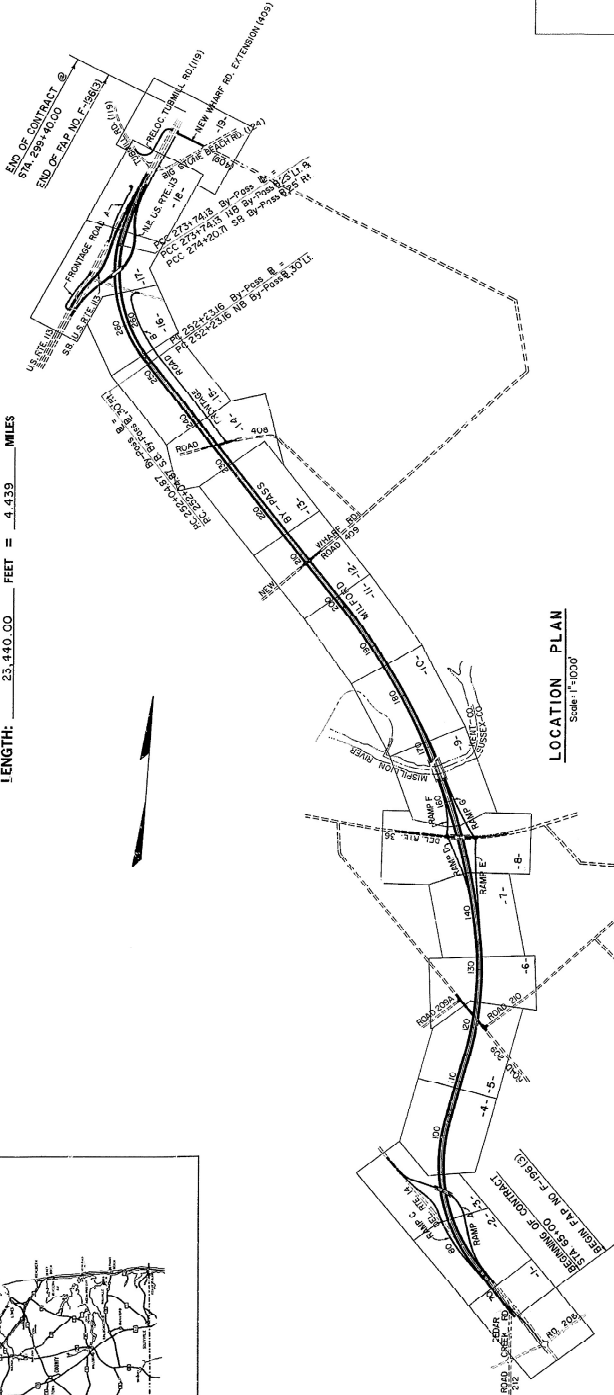


BEGIN PROJECT: STATION NO. 65+00.00 END: STATION NO. 235+40.00

LENGTH: 23,440.00 FEET = 4.439 MILES

LOCATION PLAN

Scale 1"=1000'



CONTRACT	COUNTY	STATE	PROJECT NO.	PROJECT NAME	VEH. NUMBER
67-08-008	SUSSEX	DELL	2	F-196(3)	989
MILFORD BY-PASS					
SURVEY BOOKS					
NUMBERS 4557 - 4566					
INDEX OF SHEETS					
SHEET NO.	DESCRIPTION				
1	TITLE SHEET & LOCATION PLAN				
2-5	TYPICAL SECTIONS				
7-17	DETAILED SHEETS				
18-19	MAINTENANCE OF TRAFFIC & SEQUENCE OF CONSTRUCTION				
20-38	P.A.N.S.				
39-45	GRADING PLANS & DETOUR LAYOUTS				
46-65	PROFILES				
70-130	BRIDGE PLANS				
141	SIGNING PLANS				
142-158	STANDARD SHEETS A-1, B-1, C-1, D-1, D-6, D-11				
159	E.A.S., T.E., T.W.				

PREPARED AND RECOMMENDED
GROGAN & O'DEA, INC.
CONSULTING ENGINEERS

DATE Oct. 1967
TITLE CONSTRUCTION PLAN
PROJECT NO. 67-08-008
LICENSE NO. 1000

U. S. DEPARTMENT OF TRANSPORTATION
BUREAU OF PUBLIC ROADS

APPROVED _____ 19__

CIVILIAN ENGINEER

DELAWARE STATE HIGHWAY DEPARTMENT

RECOMMENDED

APPROVED

APPROVED 1/28 1970 John S. Robinson CIVIL ENGINEER

APPROVED _____ 19__ DIRECTOR OF OPERATIONS

CONVENTIONAL SIGNS

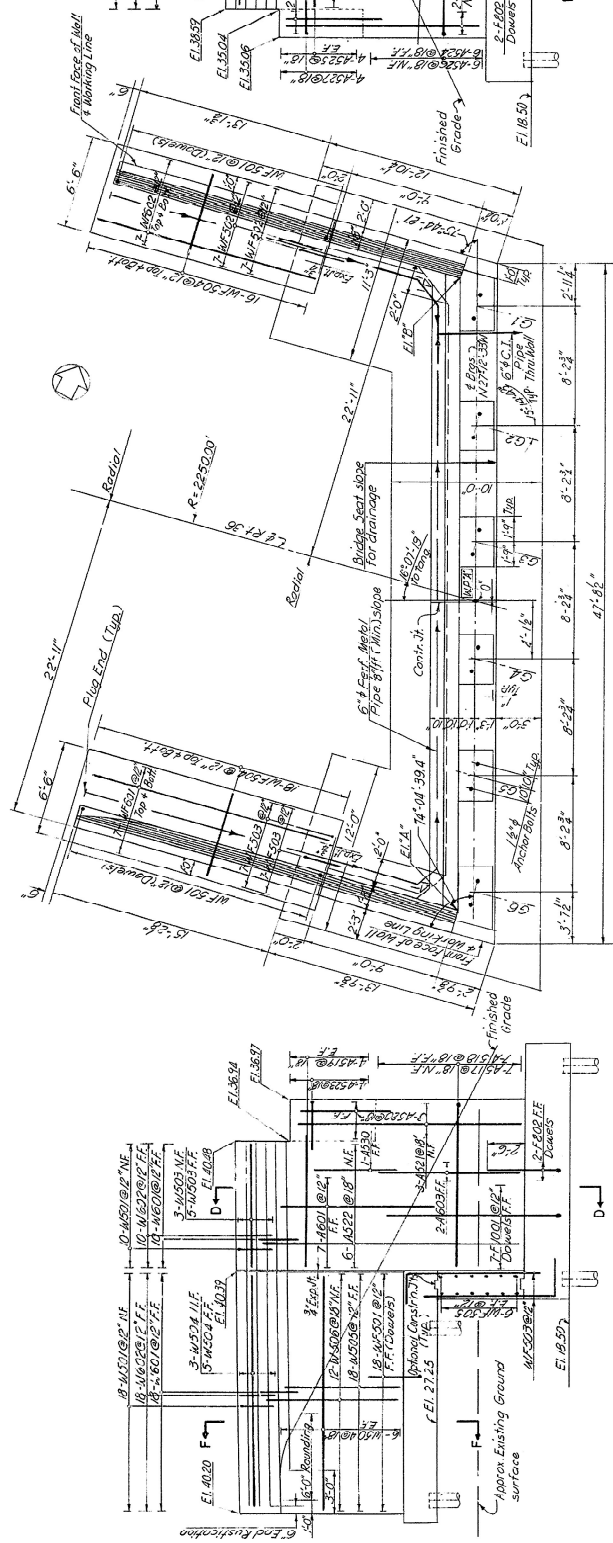
PROPOSED CENTER LINE	WOODED AREA
EXISTING RIGHT OF WAY LINE	TELEPHONE OR UTILITY POLE
CONTROLLED ACCESS LINE	BOASTING CULVERT OR PIPE
NEW P.A. CONTROLLED ACCESS LINE	PROPERTY LINE / OF LINE
CONSTRUCTION EASEMENT (PERM)	ENCE (WIRE / WOOD) ENDS
CONSTRUCTION EASEMENT (TEMP)	SHORE OF STREAM LINE
THE OF SLOPE	INT. FOR ADDITIONAL SIGNS SEE INITIAL SHEET OF EACH CONTRACT
TOP OF SLOPE OR DITCH	

SCALES

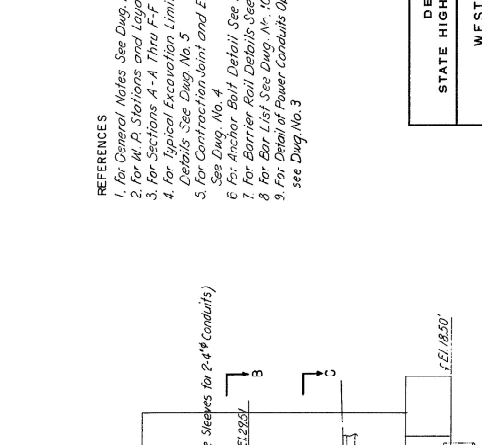
TITLE SHEET	1" = 1000 FEET
CONSTRUCTION PLAN	1" = 50 FEET
HORIZONTAL PROFILE	1" = 10 FEET
VERTICAL PROFILE	1" = 5 FEET

COUNTY	CONTRACT	SHEET	NO. OF SHEETS	DATE
DELR.	87-08-008	2	DEL. F. 81(C)	86

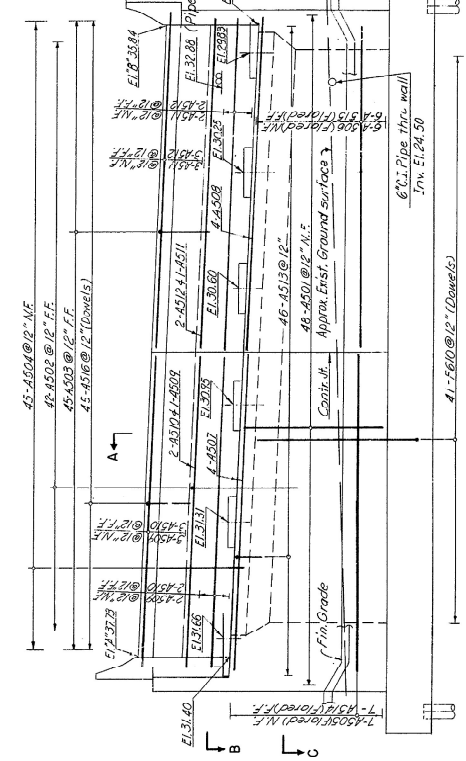
MILFORD BY-PASS
STATE ROUTE 36 OVER MILFORD BY-PASS
BRIDGE NO. 2



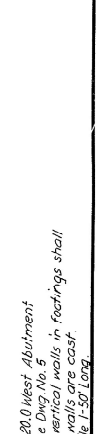
ELEVATION
N.W. WINGWALL



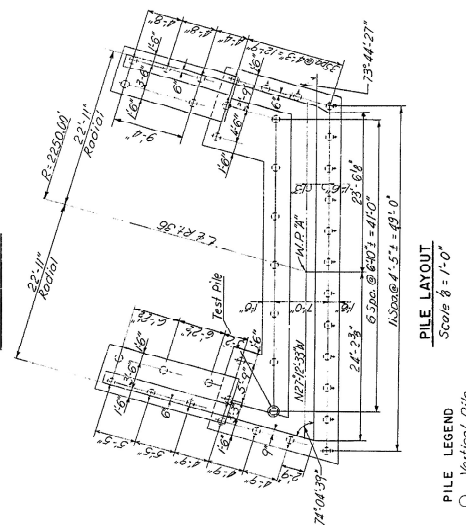
FLAN



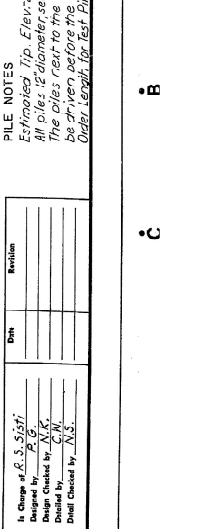
ELEVATION



ELEVATION
S.W. WINGWALL



PILE LAYOUT
 Scale 8 : 1'-0"



PILE NOTES

Estimated tip Elev=20.0 West Abutment
 All piles 12" diameter, see Dig No. 5
 The piles rest to the vertical walls in footings shall
 be driven before the walls are cast.
 Drive length for Test Pile 1-50 Log.

PILE LEGEND
 Vertical Pile
 Pile Battered in the Direction of Arrow (and)
 Test Pile

Change by	Initial
Designed by	
Checked by	
Drawn by	
Detail Checked by	

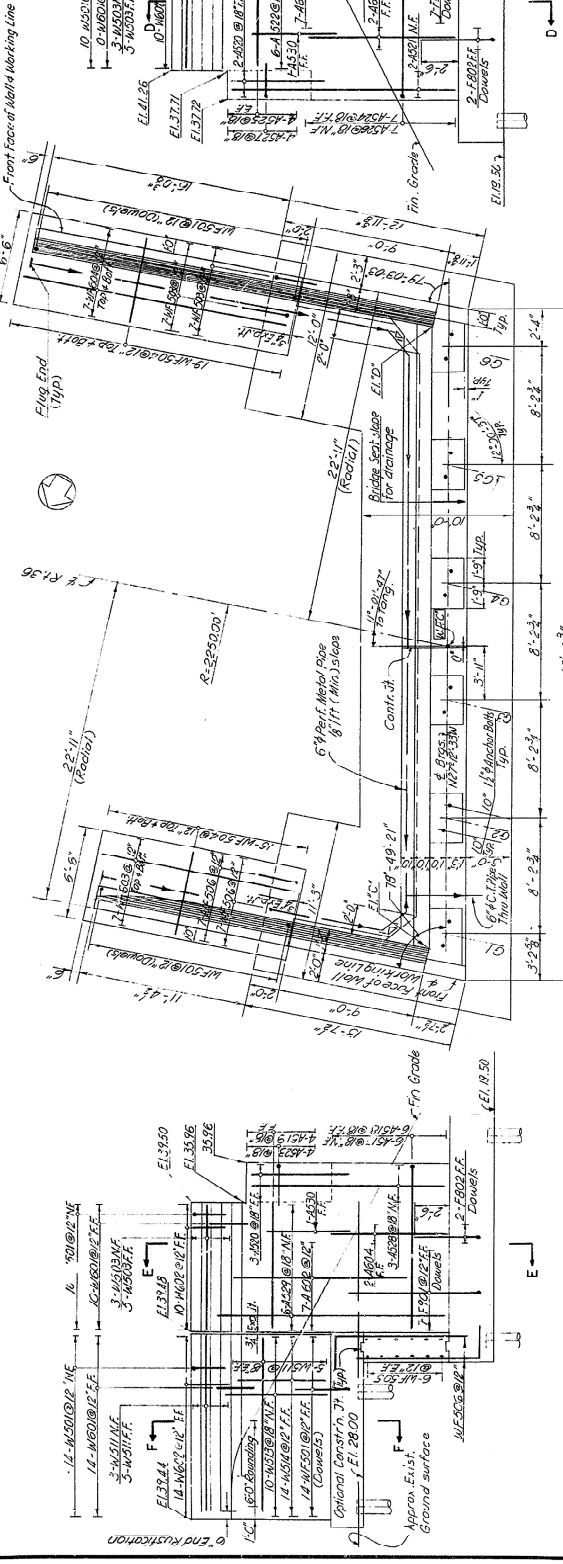
- REFERENCES**
1. For Original Notes See Dig. No. 1.
 2. For A, B Stations and Layout Plan See Dig. No. 7.
 3. For Sections A-A thru F-F See Dig. No. 4.
 4. For Typical Excavation Limits and Slope Flving Details See Dig. No. 5.
 5. For Contraction Joint and Expansion Joint Details See Dig. No. 4.
 6. See Dig. No. 4 Detail See Dig. No. 8.
 7. For Barrier Rail Details See Dig. No. 10.
 8. For Bar List See Dig. No. 10.
 9. For Detail of Power Conduits Opening in Abutments see Dig. No. 5.

DELAWARE	
STATE HIGHWAY DEPARTMENT	
WEST ABUTMENT	
APPROVED BY:	
DWG. NO.	2
SCALE	4'-10"
DATE	8-4-57
DESIGNED BY	J. J. O'Dea
CHECKED BY	J. J. O'Dea
DATE	8-4-57
CONSULTING ENGINEERS	GOODKIND & O'DEA, INC.

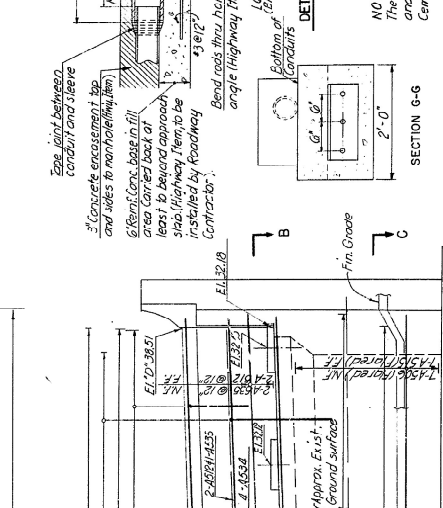
Printed and Recommended
 GOODKIND & O'DEA, INC.
 Consulting Engineers

COUNTY	CONTRACT	DATE	SCALE	DATE	SCALE
DELAWARE	87-08-008	2 DEL	F-19(3)	87	1/2"

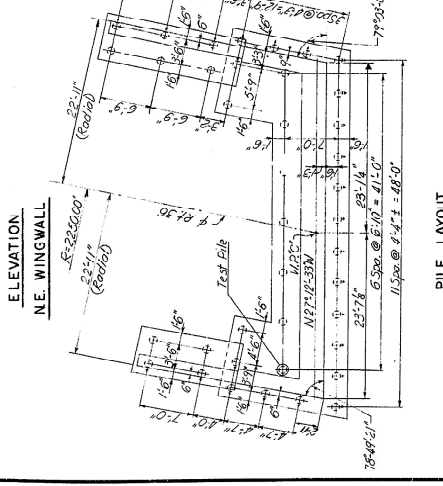
MILFORD BY-PASS
STATE ROUTE 36 OVER MILFORD BY-PASS
BRIDGE NO. 2



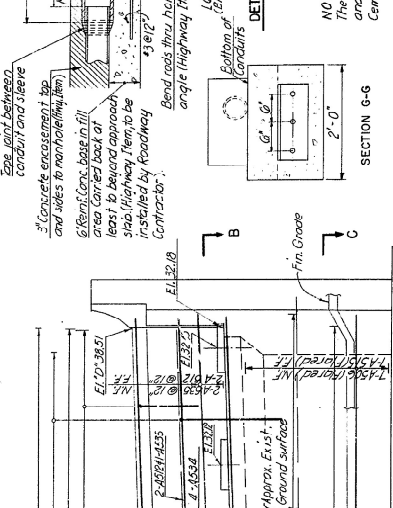
ELEVATION
S.E. WINGWALL



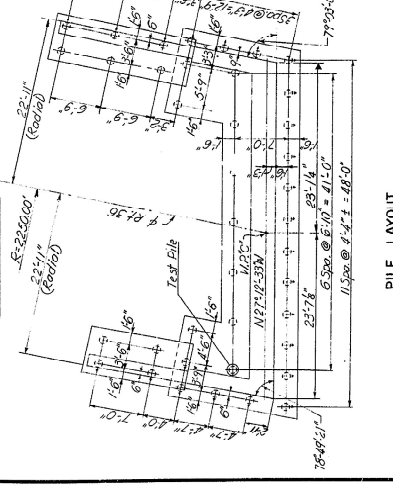
ELEVATION
S.W. WINGWALL



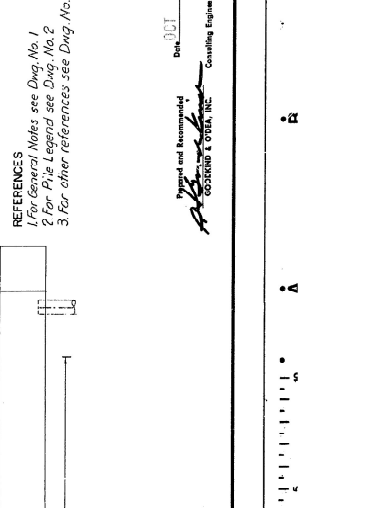
PLAN



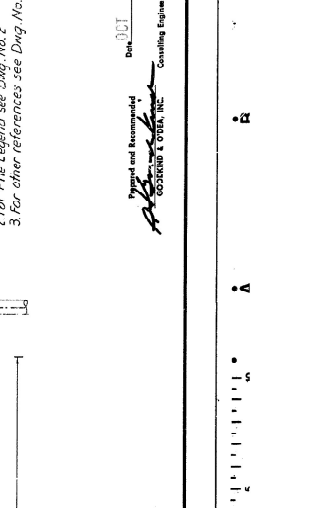
ELEVATION



PILE LAYOUT



DETAIL OF POWER CONDUITS OPENING



REFERENCES

- 1 For General Notes see Divg. No. 1
- 2 For Pile Legend see Divg. No. 2
- 3 For other references see Divg. No. 2

NOTE:
The Contractor is to install the pipe sleeves, bolts and seat L's and the payment shall be included in Item 6, Portland Cement Concrete Masonry Substructure.

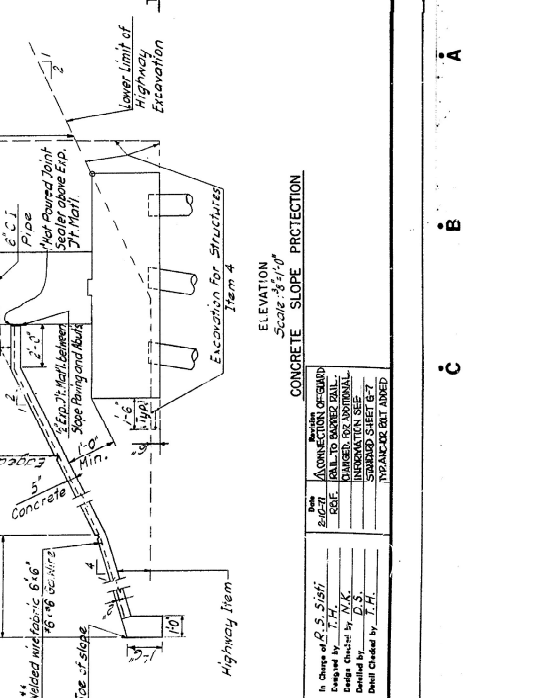
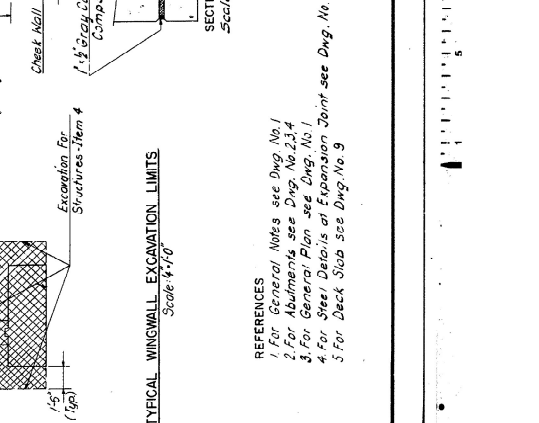
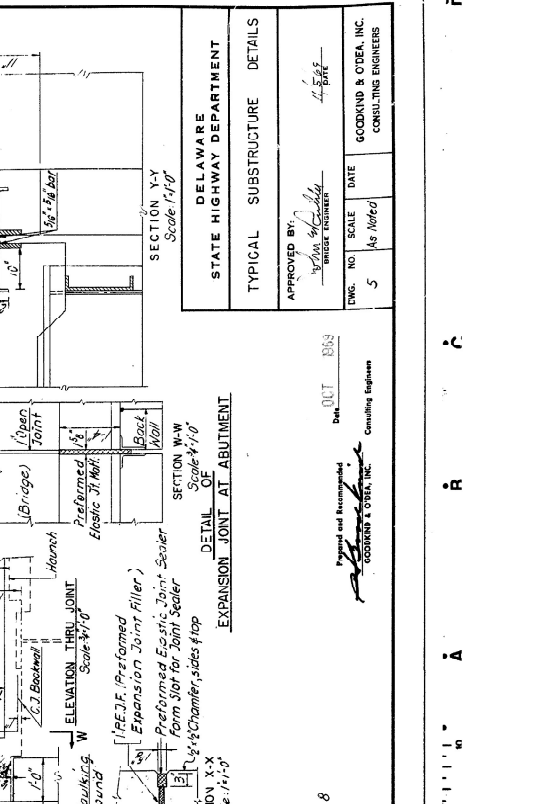
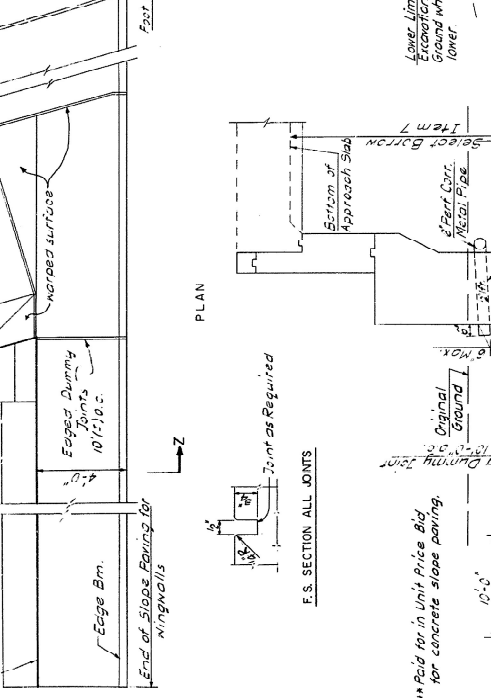
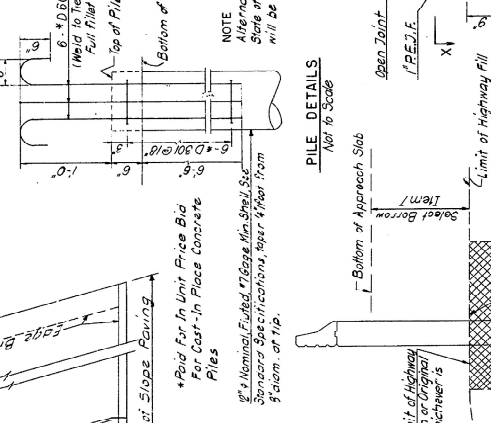
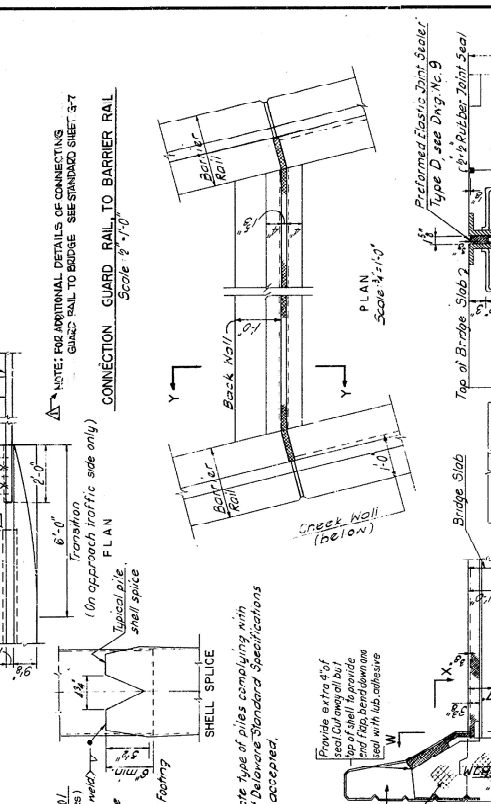
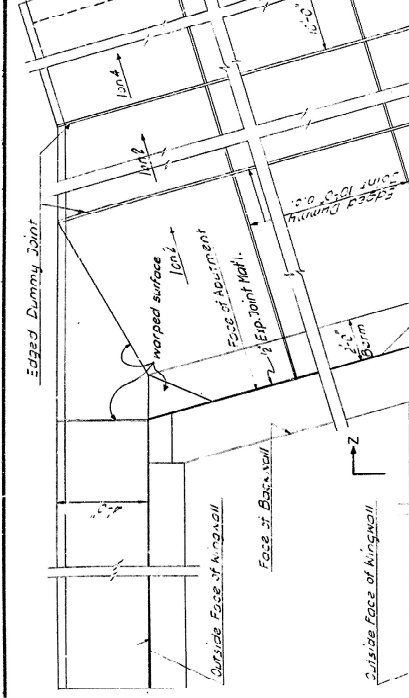
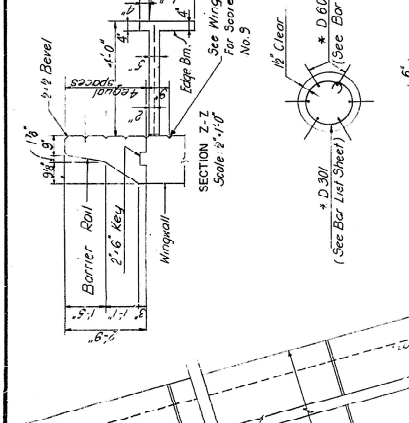
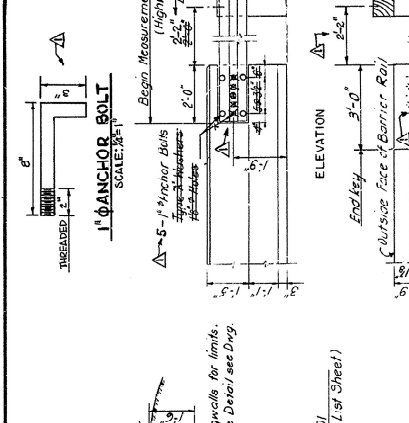
IN ABUTMENTS
Scale: 1"=1'-0"

SECTION G-G
Scale: 1"=1'-0"

APPROVED BY:
[Signature]
DESIGNED BY:
[Signature]
CHECKED BY:
[Signature]

COUNTY	CONTRACT	NO. & DATE	REV. & DATE	DATE
KENT	87-0008	2 DEL	1-19-68	89
S.S.E.A.				30

**MILFORD BY-PASS
STATE ROUTE 36 OVER MILFORD BY-PASS
BRIDGE NO. 2**



DESIGNED BY	DATE	SCALE	NO.
W. H. HARRIS	1-19-68	As Noted	5

APPROVED BY	DATE	SCALE	NO.
W. H. HARRIS	1-19-68	As Noted	5

STATE HIGHWAY DEPARTMENT	DELAWARE
TYPICAL SUBSTRUCTURE DETAILS	

GOODKIND & OTEA, INC.
CONSULTING ENGINEERS

Printed and Recommended
GOODKIND & OTEA, INC.
Consulting Engineers

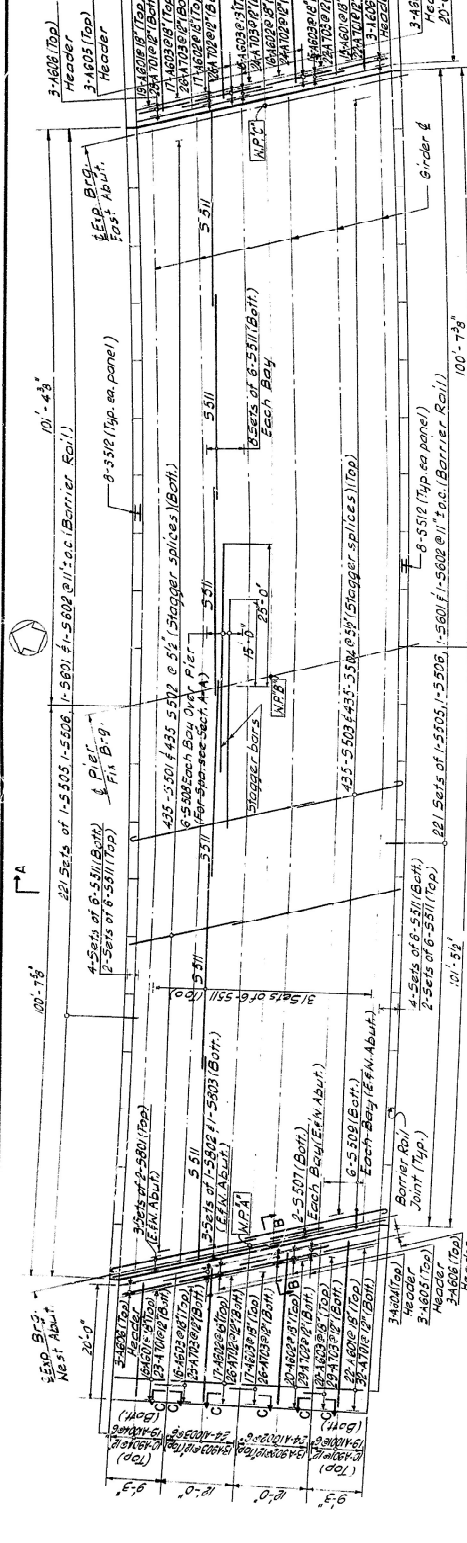
REFERENCES
1. For General Notes see Dwg. No. 1
2. For Abutments see Dwg. No. 2, 3, 4
3. For General Plan see Dwg. No. 1
4. For Steel Details at Expansion Joint see Dwg. No. 8
5. For Deck Slab see Dwg. No. 9

CONCRETE SLOPE PROTECTION
ELEVATION
SCALE: 1/4" = 1'-0"

DATE	BY	REVISION
1-19-68	W. H. HARRIS	CONNECTION OF SLAB TO GUARD RAIL
1-19-68	W. H. HARRIS	INFORMATION SEE SHOWN SHEET B-7
1-19-68	W. H. HARRIS	FINANCIAL SET DOWNS

COUNTY	CONTRACT	DATE	SCALE
DELR.	67-08-008	2	DEL. F. 1:1/4 (3)
STATE	PROJECT NO.	DATE	SCALE
DELR.	115-11-100	93	1/8" = 1'-0"

**MILFORD BY-PASS
BRIDGE NO. 2**

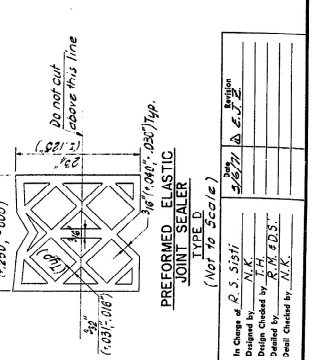
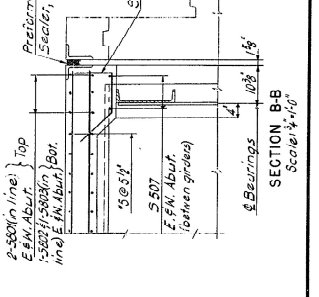
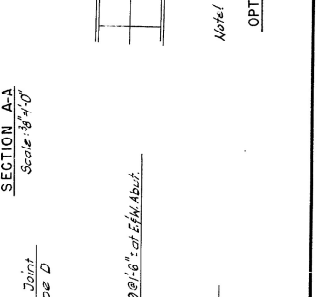
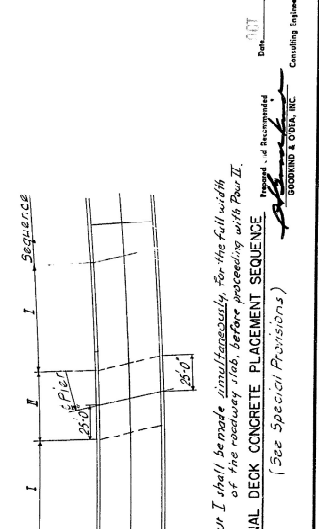
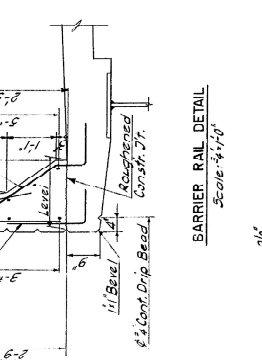
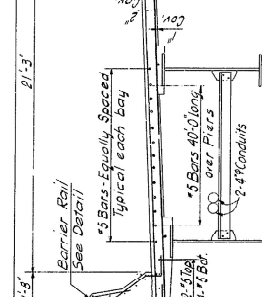
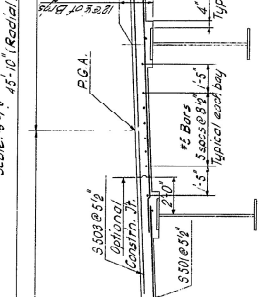
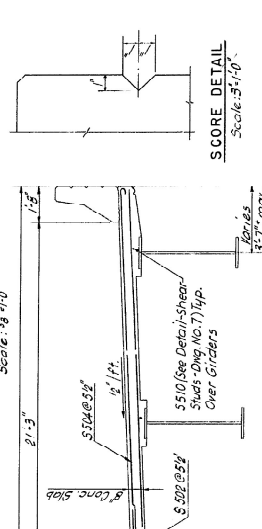
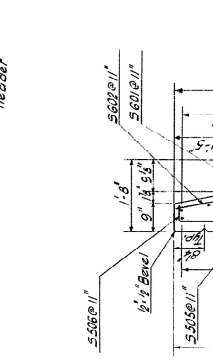
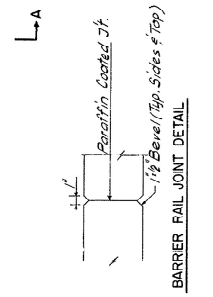
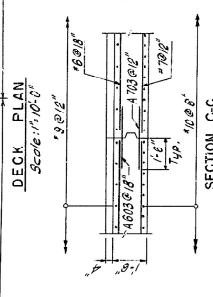
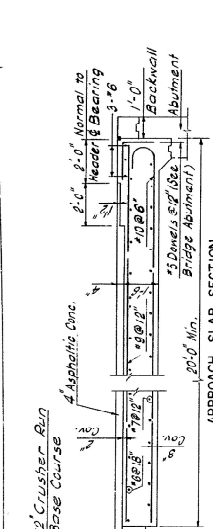


NOTE:
 1. Vertical strike of preformed expansion joint material shall be placed along roadway surface and approach slab with 1/2" (vertical dimension) of approved joint sealant along the top edge of all joints.

NOTES
 1. Cast of Approach Slab Reinforcing to be included in price bid for Item 20.
 2. Longitudinal joints in Approach Slab are optional.

REFERENCES
 1. For General Notes see Div. No. 1
 2. For Bar List, Bending Details see Div. No. 11
 3. For Framing Plan see Div. No. 7
 4. For Exp. Joint Details of Abutments see Div. No. 5
 5. For N.B. Stations and Layout Plan see Div. No. 7
 6. For Deck Elevations and Deflections see Common Detail Div. No. 01.

APPROVED BY:		DATE
[Signature]		11/5/83
BRIDGE ENGINEER		
DWG. NO.	SCALE	DATE
9	1/4" = 1'-0"	11/5/83
GOLDKIND & ODEA, INC.		CONSULTING ENGINEERS



Note: Pour I shall be made simultaneously for the full width of the roadway and, before proceeding with Pour II, OPTIONAL DECK CONCRETE PLACEMENT SEQUENCE (See Special Provisions)

In Charge of P. S. Sisti	DATE
Design Checked by J. H. K.	11/5/83
Drawn by R. M. E. P. S.	
Revised by N.K.	
Drawn by N.K.	